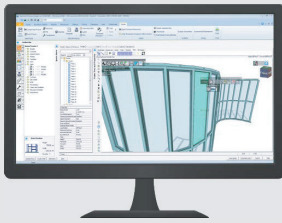


# DESIGN, ESTIMATION AND MANUFACTURING SOLUTIONS FOR WINDOW & DOOR COMPANIES



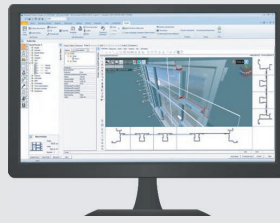
Increase your productivity and gain a competitive advantage with the world's #1 window and door software solution provider.

## DESIGN



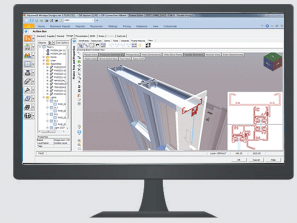
Creating Window and Door designs has never been easier.

## ESTIMATE



Send quotes quickly & accurately, knowing the information is based on real-time data.

## MANUFACTURE

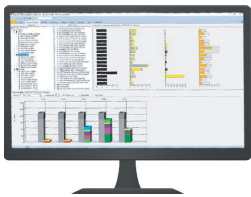


Produce accurate products to specification, on time with less waste.

+ Soft Tech V6 Cloud hosting provides an on-demand software solution

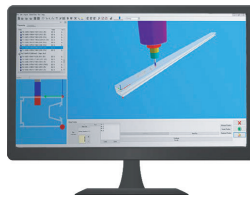


## Soft Tech V6 Add-On Modules



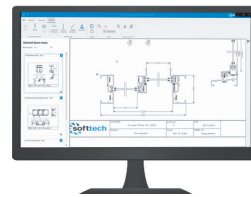
### SCHEDULING

Transform manual scheduling of employees and machinery into an effortless process.



### AUTOMATION

Easily set up and configure your CNC, milling and saw machines without the need for manual programming.



### SHOP DRAWINGS

Create detailed shop drawings with limited drawing skills. No need for expensive CAD software licenses.



### DEALER MANAGEMENT

Easily share up to date product, pricing and specification information with your dealer network.

## About Soft Tech

Our software is specifically designed for manufacturers and fabricators of residential and commercial windows and doors.

- Serving the window and door industry for more than 30 years.
- More than 10,000 customers worldwide.
- End-to-end solutions for your business.
- Software that meets your changing needs.

United States | Australia | New Zealand | United Kingdom | France | Turkey | India  
[www.softtech.com](http://www.softtech.com) | Sign up for your free demo here

